

# Paleontologia ed evoluzione dei Vertebrati

Corso di Laurea Magistrale

Science for Education: Didattica e Comunicazione delle  
Scienze

1° anno, II semestre (corso a scelta)

a.a. 2021-2022

Docente responsabile:

*Prof. Cesare A. Papazzoni* (5,5CFU)

[papazzoni@unimore.it](mailto:papazzoni@unimore.it)

Co-docente:

*Prof. Annalisa Ferretti* (0,5CFU)

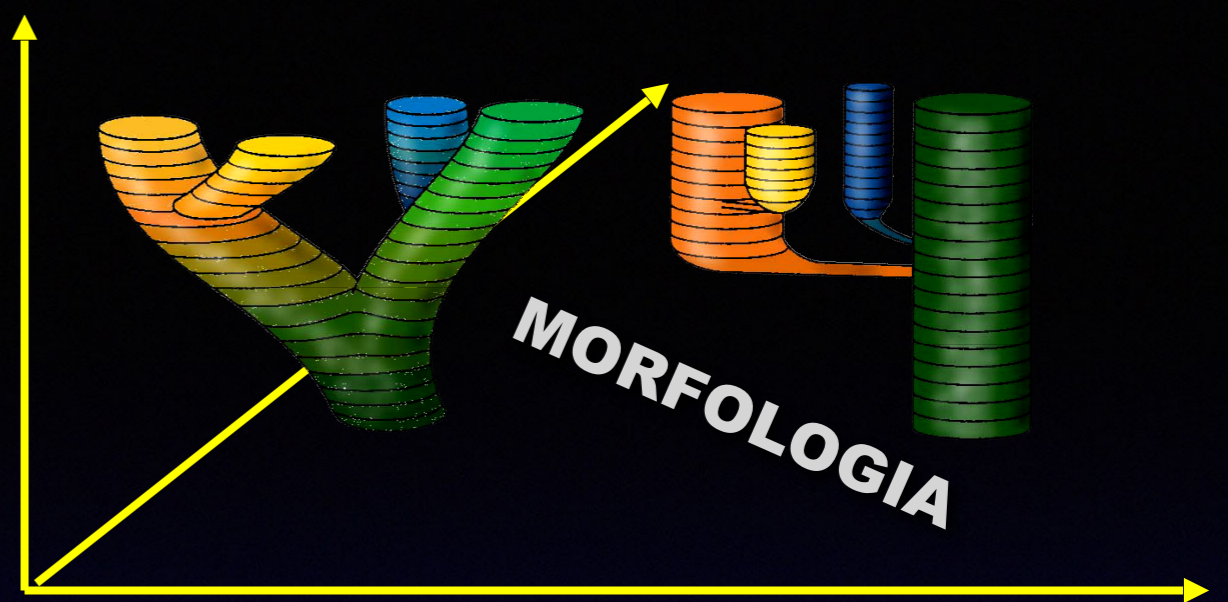
Dipartimento di Scienze Chimiche e Geologiche, UNIMORE

LEZIONI IN PRESENZA (?)



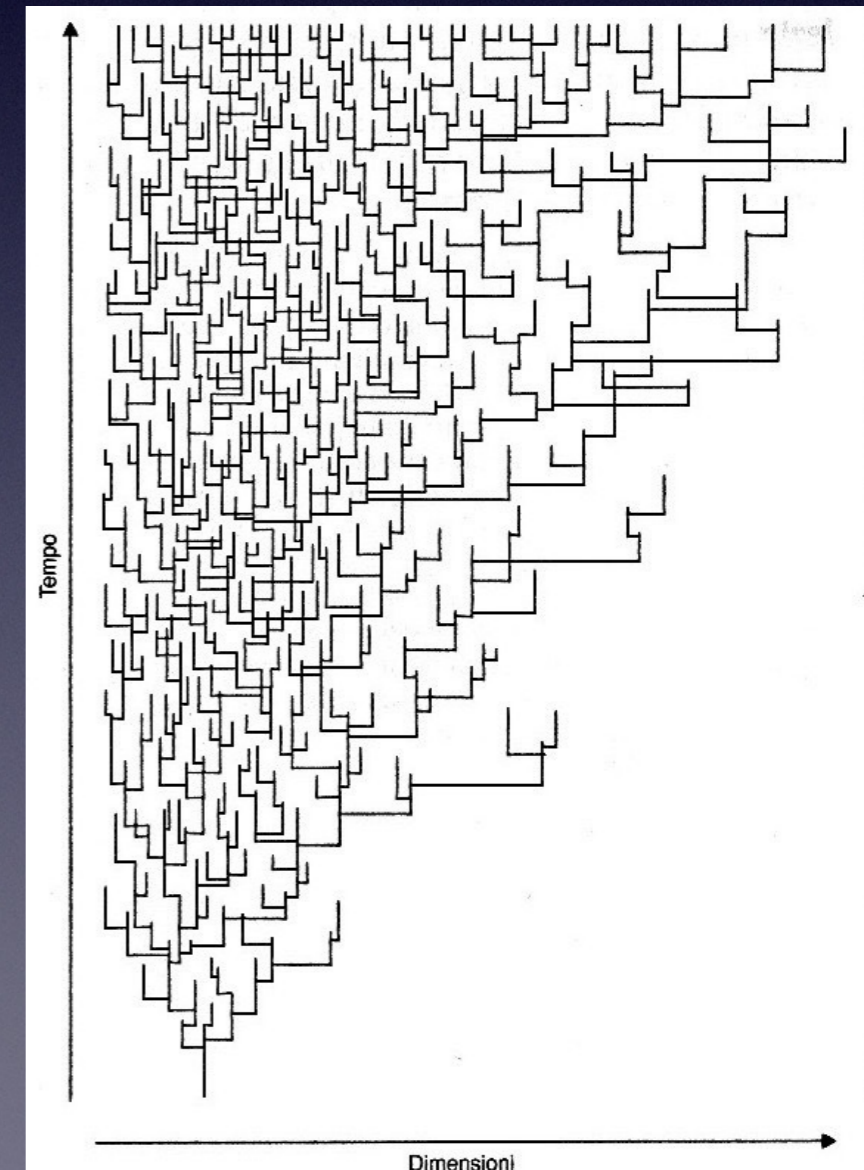
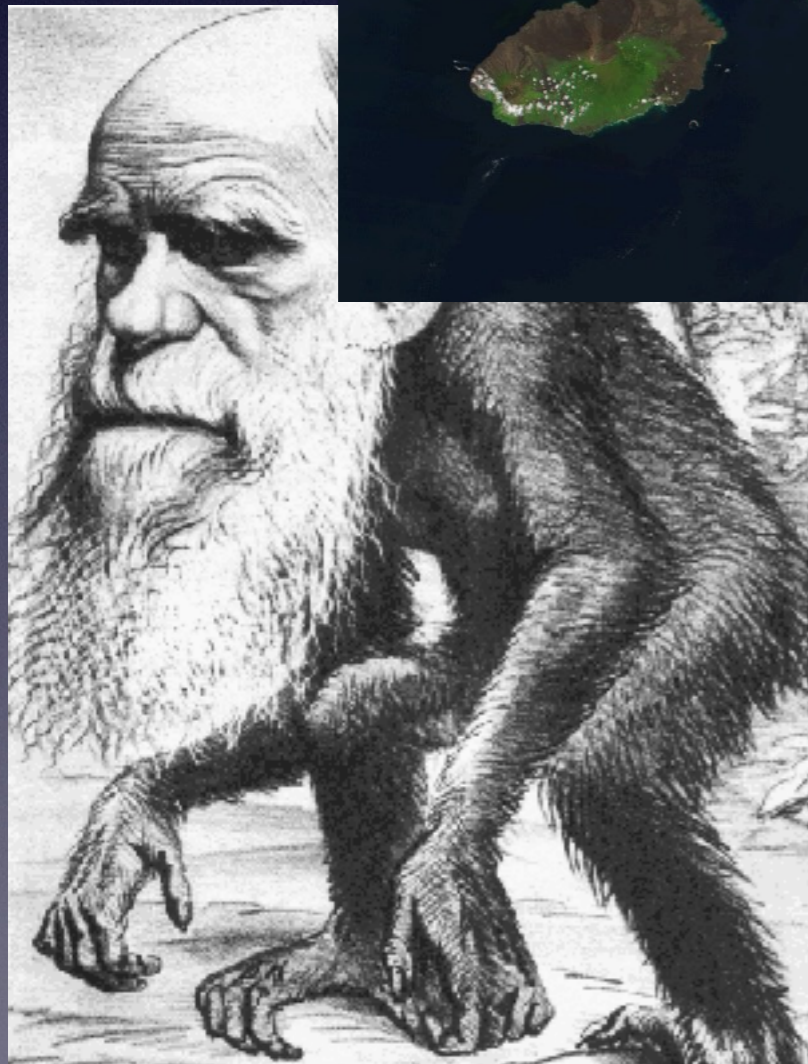
# Evoluzione: da C. Darwin a S.J. Gould

TEMPO

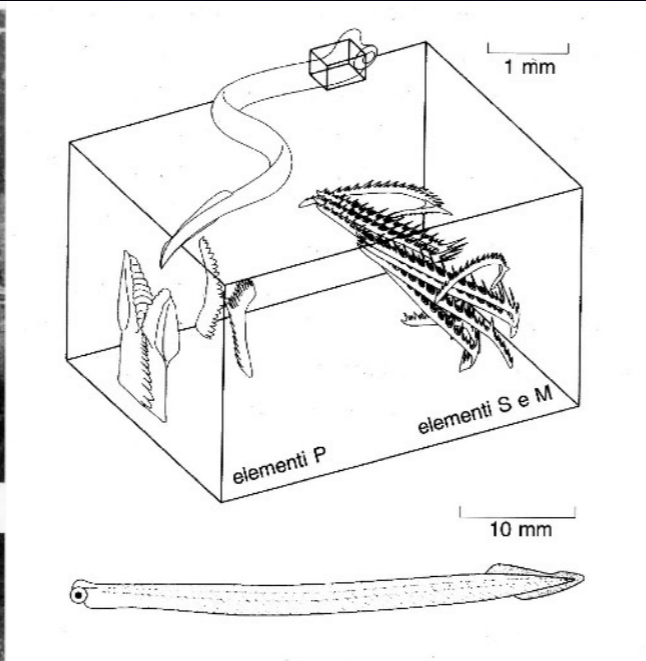
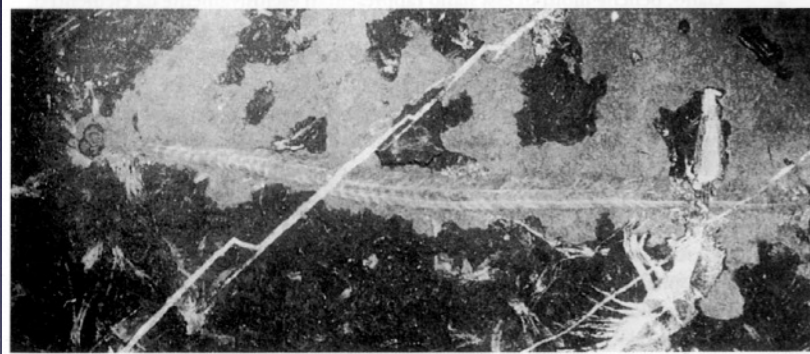
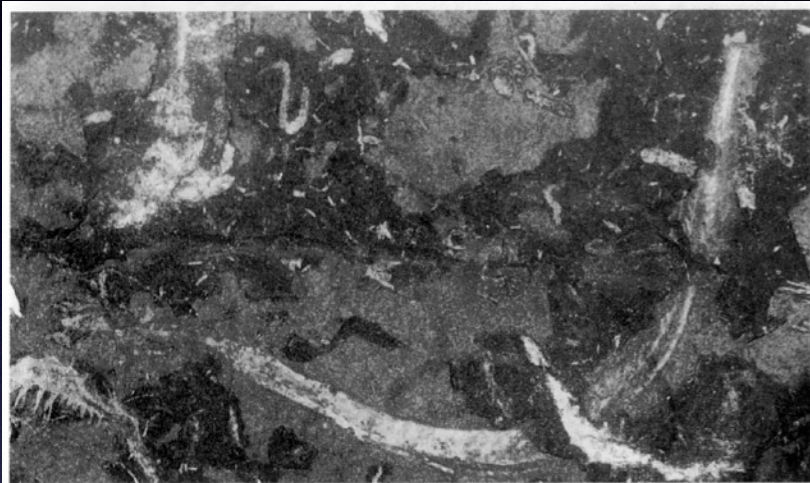
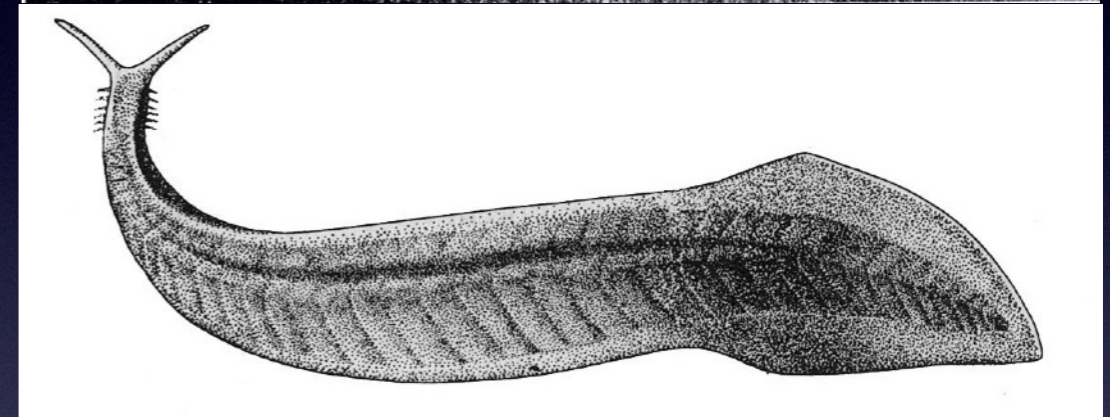
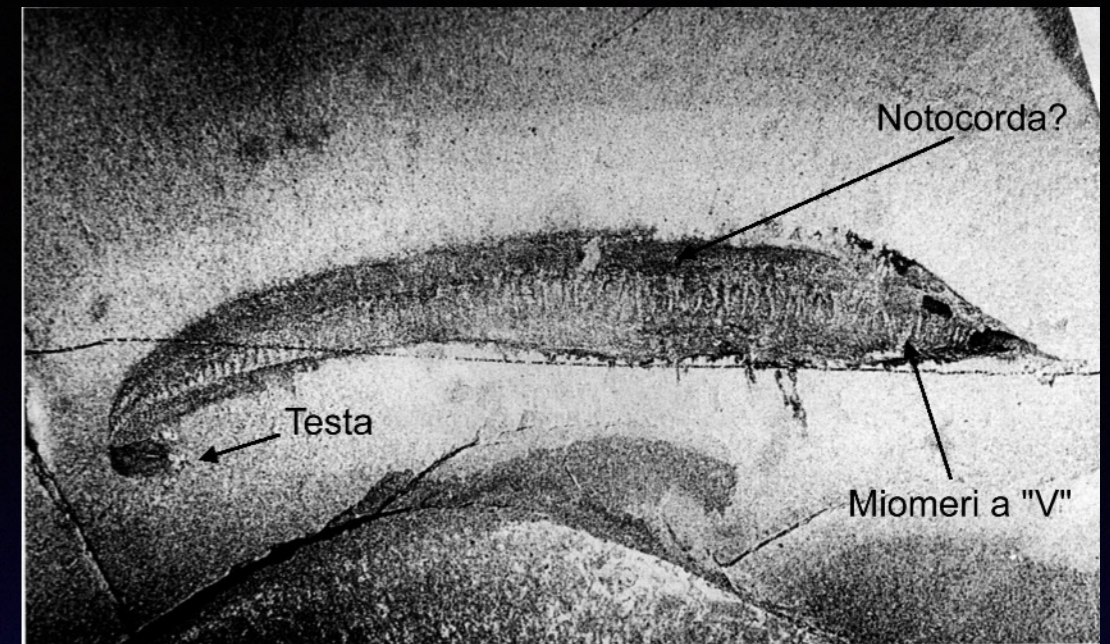


GRADUALISMO  
FILETICO  
(prevalenza di  
linee oroteliche)

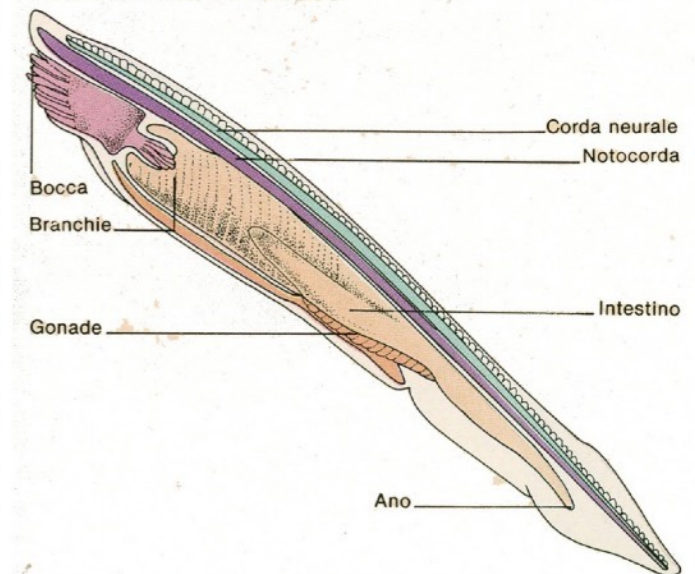
EQUILIBRI  
INTERMITTENTI  
(linee braditeliche alternate  
a brevi intervalli tachitelici)



# Origini dei vertebrati

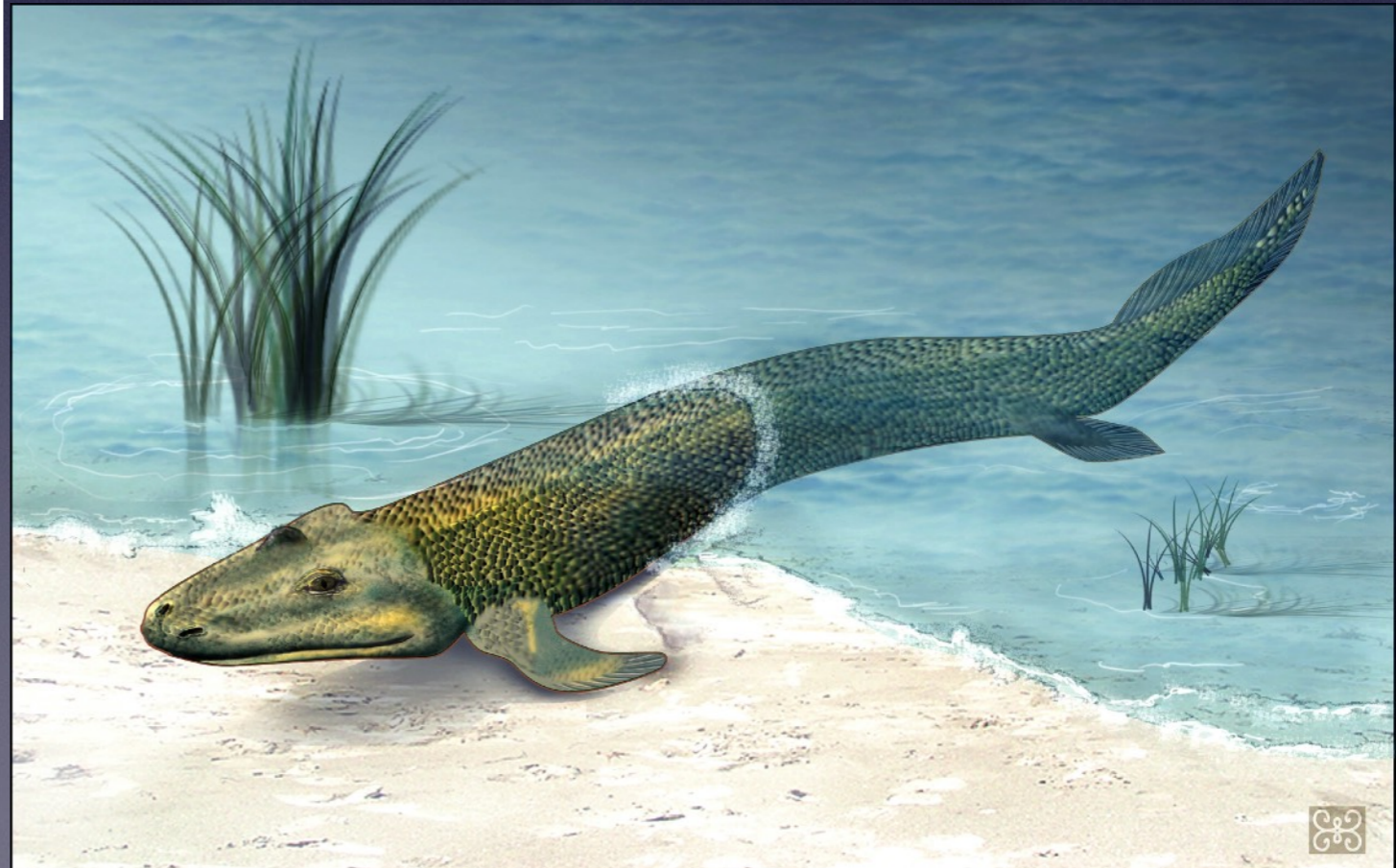
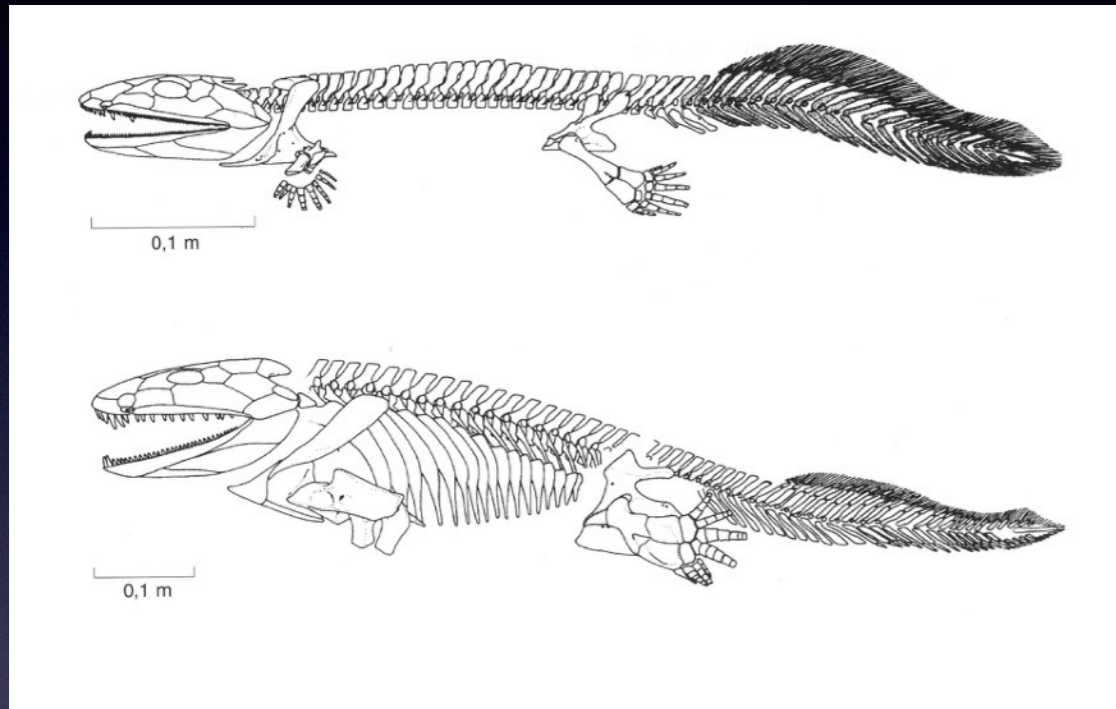


## Anatomia dell'anfiosso

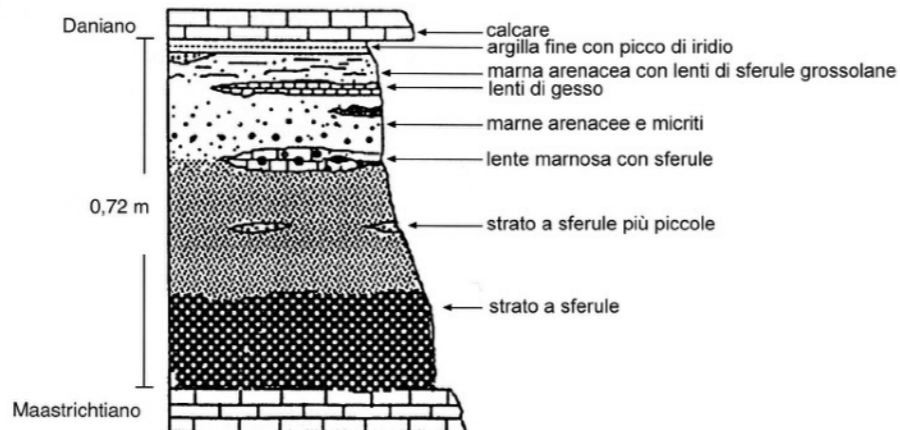
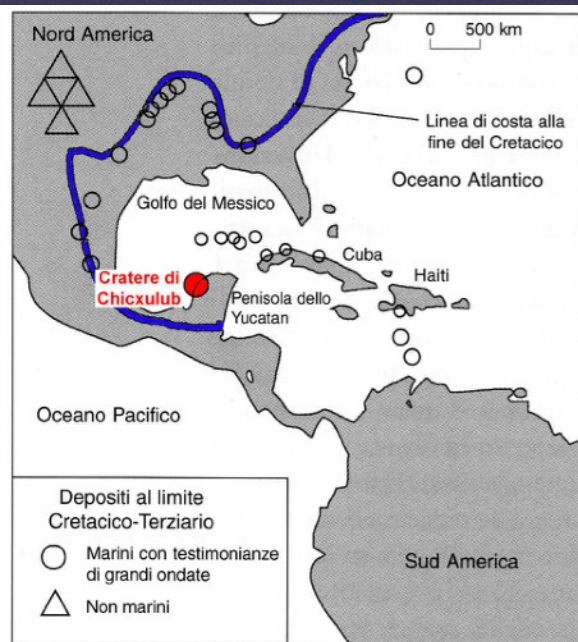
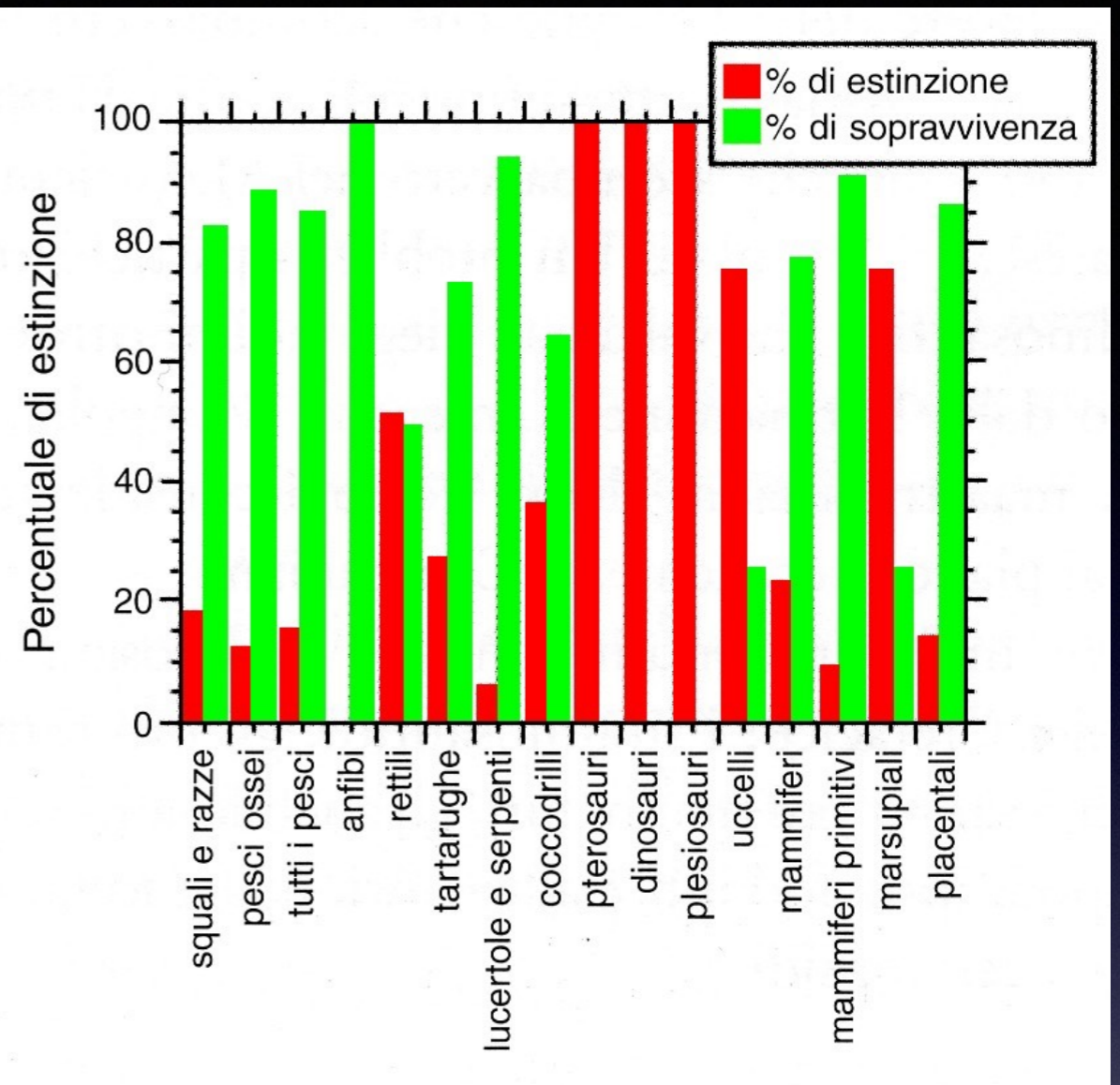


*L'anfiosso possiede un'estremità frontale ben definita, ma è privo di organi sensori sviluppati e di un vero e proprio cervello. Inoltre la notocorda dorsale si prolunga fino al "capo", mentre nelle larve dei tunicati, essa costituisce soltanto un rinforzo della coda.*

# Le grandi transizioni evolutive: origine dei tetrapodi



# Le grandi estinzioni: il K/Pg





# Vertebrati fossili in Italia (con visita a museo)

